



# THE OXWICH BAY 1,520 SQ FT

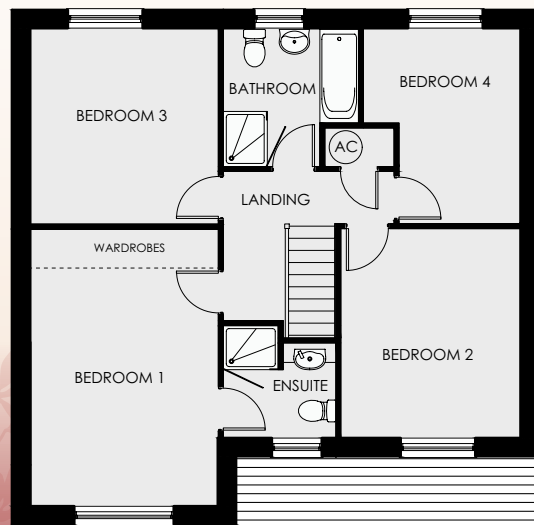
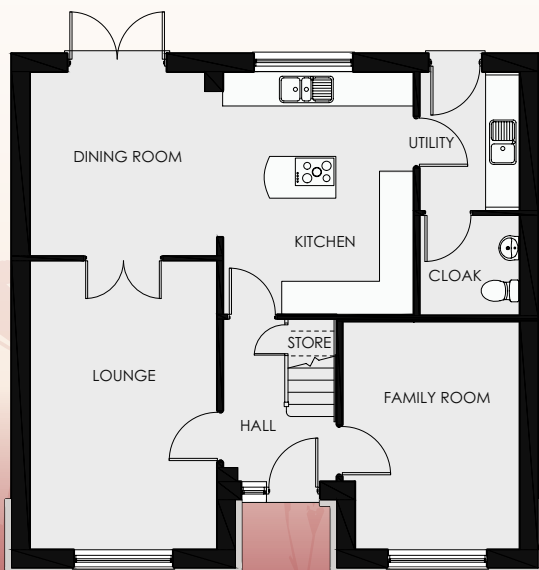
Four bedroom detached home

Living	5.18 m	x	3.33 m	17' 9"	x	10' 11"
Family	4.07 m	x	2.92 m	13' 4"	x	9' 7"
Kitchen	4.35 m	x	3.74 m	14' 3"	x	12' 3"
Utility	2.48 m	x	1.77 m	8' 1"	x	5' 10"
Dining	3.29 m	x	3.20 m	10' 9"	x	10' 6"
Cloak	1.76 m	x	1.77 m	5' 10"	x	5' 10"

Bedroom 1	4.98 m	x	3.36 m	16' 4"	x	11' 1"
Ensuite	2.02 m	x	2.02 m	6' 8"	x	6' 8"
Bedroom 2	3.75 m	x	3.20 m	12' 3"	x	10' 6"
Bedroom 3	3.50 m	x	3.36 m	11' 6"	x	11' 1"
Bedroom 4	3.50 m	x	2.85 m	11' 6"	x	9' 4"
Bathroom	2.45 m	x	2.45 m	8' 1"	x	8' 1"



WDL Homes



*Ty Newydd*  
HEIGHTS