



# THE MEWSLADE 1,162 SQ FT

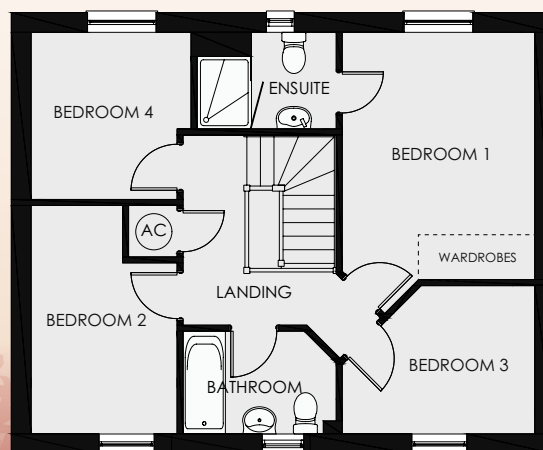
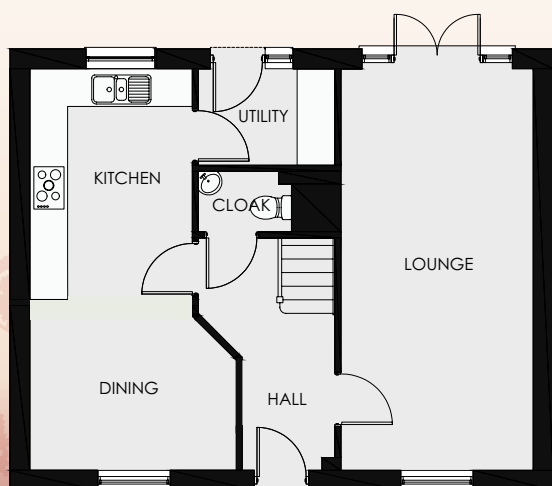
Four bedroom detached home

Living	6.60 m x 3.17 m	21' 8" x 10' 5"
Kitchen	3.80 m x 2.66 m	12' 5" x 8' 9"
Dining	2.70 m x 3.38 m	8' 11" x 11' 1"
Utility	1.57 m x 2.26 m	5' 2" x 7' 5"
Cloak	1.54m x 1.00 m	5' 1" x 3' 3"

Bedroom 1	4.07 m x 3.17 m	13' 4" x 10' 5"
Ensuite	2.30 m x 1.57 m	7' 7" x 5' 2"
Bedroom 2	2.38 m x 3.75 m	7' 10" x 12' 4"
Bedroom 3	3.17 m x 2.43 m	10' 5" x 8' 0"
Bedroom 4	2.62 m x 2.74 m	8' 7" x 9' 0"
Bathroom	2.53 m x 1.70 m	8' 4" x 5' 7"



WDL Homes



*Ty Newydd*  
HEIGHTS