



THE LAUGHARNE 1,205 SQ FT

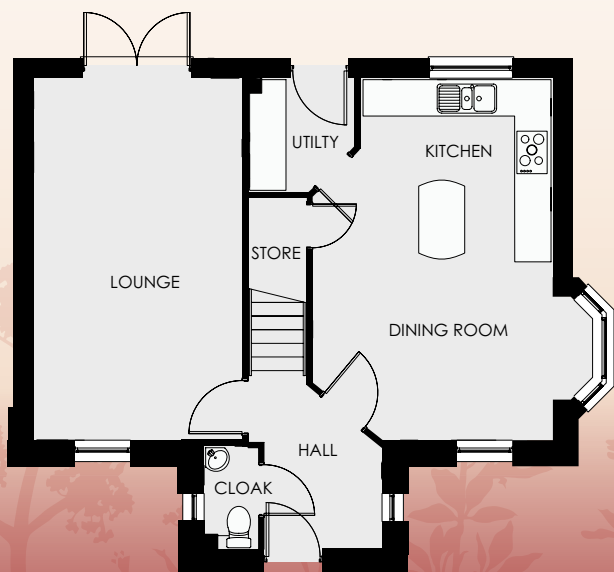
Four bedroom detached home

Living	5.87 m x 3.36 m	19' 3" x 11' 0"
Kitchen	3.88 m x 2.76 m	12' 9" x 9' 0"
Dining	4.52 m x 3.12 m	14' 10" x 10' 3"
Utility	1.80 m x 1.69 m	5' 11" x 5' 7"
Cloak	1.63 m x 0.85 m	5' 3" x 2' 9"

Bedroom 1	3.88 m x 3.40 m	12' 9" x 11' 2"
Ensuite	2.32 m x 1.87 m	7' 7" x 6' 2"
Bedroom 2	2.92 m x 3.18 m	9' 7" x 10' 5"
Bedroom 3	2.92 m x 2.57 m	9' 7" x 8' 5"
Bedroom 4	2.84 m x 2.06 m	9' 4" x 6' 9"
Bathroom	3.01 m x 1.87 m	9' 10" x 6' 2"



WDL Homes



Ty Newydd
HEIGHTS