



# THE ASHFORD 1,375 SQ FT

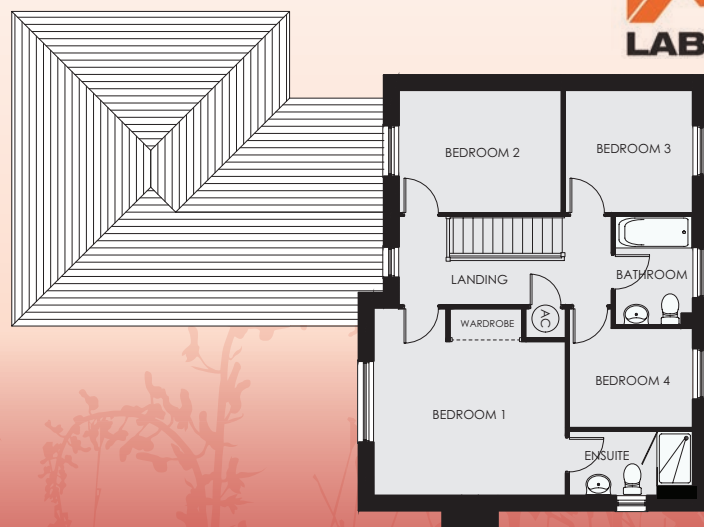
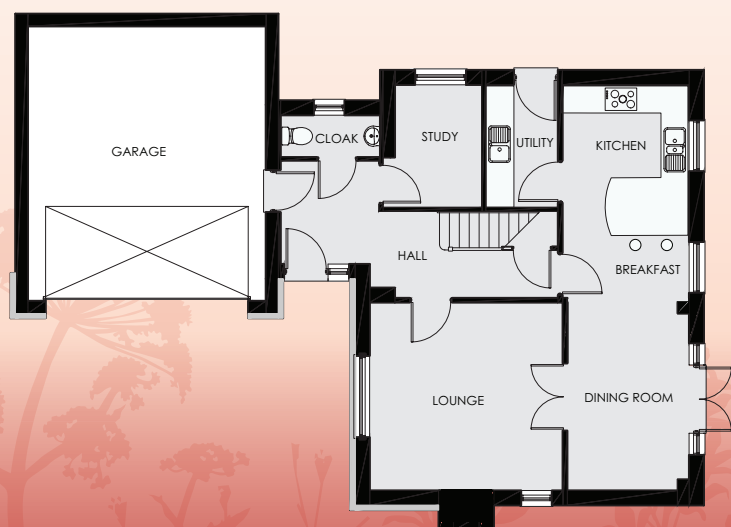
Four bedroom detached home

Living	4.20 m	x	4.10 m	13' 5"	x	13' 3"
Kitchen	2.72 m	x	4.65 m	8' 11"	x	15' 3"
Dining	2.63 m	x	4.10 m	8' 8"	x	13' 3"
Utility	2.65 m	x	1.55 m	8' 8"	x	5' 1"
Study	2.65m	x	1.86 m	8' 8"	x	6' 2"
Cloak	2.20m	x	0.86 m	7' 2"	x	2' 10"

Bedroom 1	4.19 m	x	4.10 m	13' 9"	x	13' 3"
Ensuite	2.65 m	x	1.38 m	8' 8"	x	4' 6"
Bedroom 2	3.53 m	x	2.65 m	11' 7"	x	8' 8"
Bedroom 3	2.76 m	x	2.65 m	9' 0"	x	8' 8"
Bedroom 4	2.10 m	x	2.65 m	6' 10"	x	8' 8"
Bathroom	2.35 m	x	1.68 m	7' 8"	x	5' 6"



WDL Homes



*Ty Newydd*  
HEIGHTS