



The Windsor

Four Bedroom Home

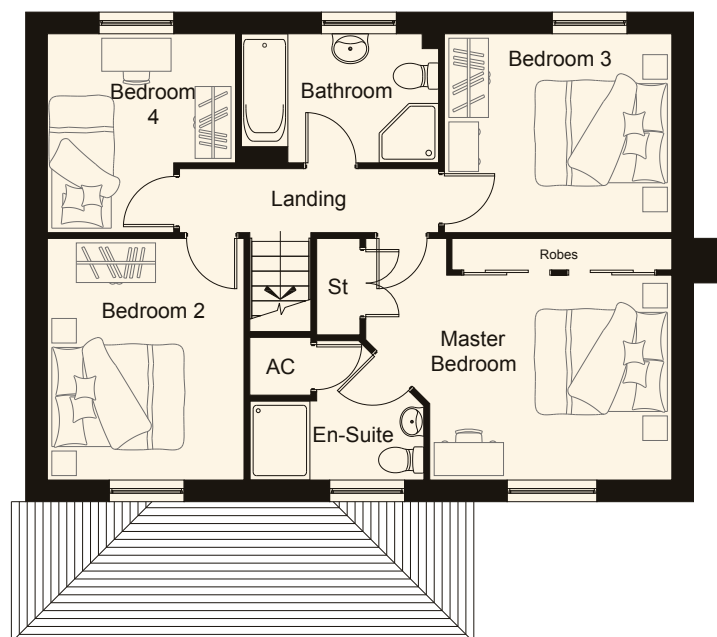
This traditional four bedroom home offers light and spacious accommodation over two floors. The ground floor provides an open plan kitchen/dining room with french doors to the garden and separate utility room, a through lounge as well as entrance hall with separate cloakroom and study. The first floor has a master bedroom with en-suite, a generous family bathroom, two further double bedrooms, while the fourth bedroom is ideal as a nursery.



Ground Floor Plan

Kitchen	4.137*	x	3.093*
Utility	2.929	x	1.466
Dining	3.500	x	2.796
Living	6.709	x	3.345
Study	2.929	x	2.848
Cloak	1.734	x	0.955

* maximum room dimension



First Floor Plan

M Bedroom	4.534*	x	3.634*
En-Suite	2.638*	x	2.136*
Bedroom 2	3.634	x	2.954
Bedroom 3	2.987	x	2.825
Bedroom 4	3.420*	x	2.987*
Bathroom	2.988	x	1.930

* maximum room dimension